

SSAB Weathering Sections

For advanced engineering and construction under tough atmospheric conditions

SSAB Weathering Section is structural steel with anti-corrosive properties, which minimize the need for maintenance and corrosion-prevention treatment.

SSAB's cold-formed steel sections are suitable for practically any kind of steel structure, whether for commercial or residential buildings, machines or appliances. Typical applications are frames and sub-frames, vehicle and trailer bodies, warehouse equipment and masts.

The accuracy of the cross-sectional form and good formability for high-strength material makes it possible to create long-lasting and light structures.

SSAB Weathering Section 355 meets or exceeds the standard requirements of EN 10162 (tolerance) and COR-TEN B specification. Upon agreement, it can be delivered as multi-certified.

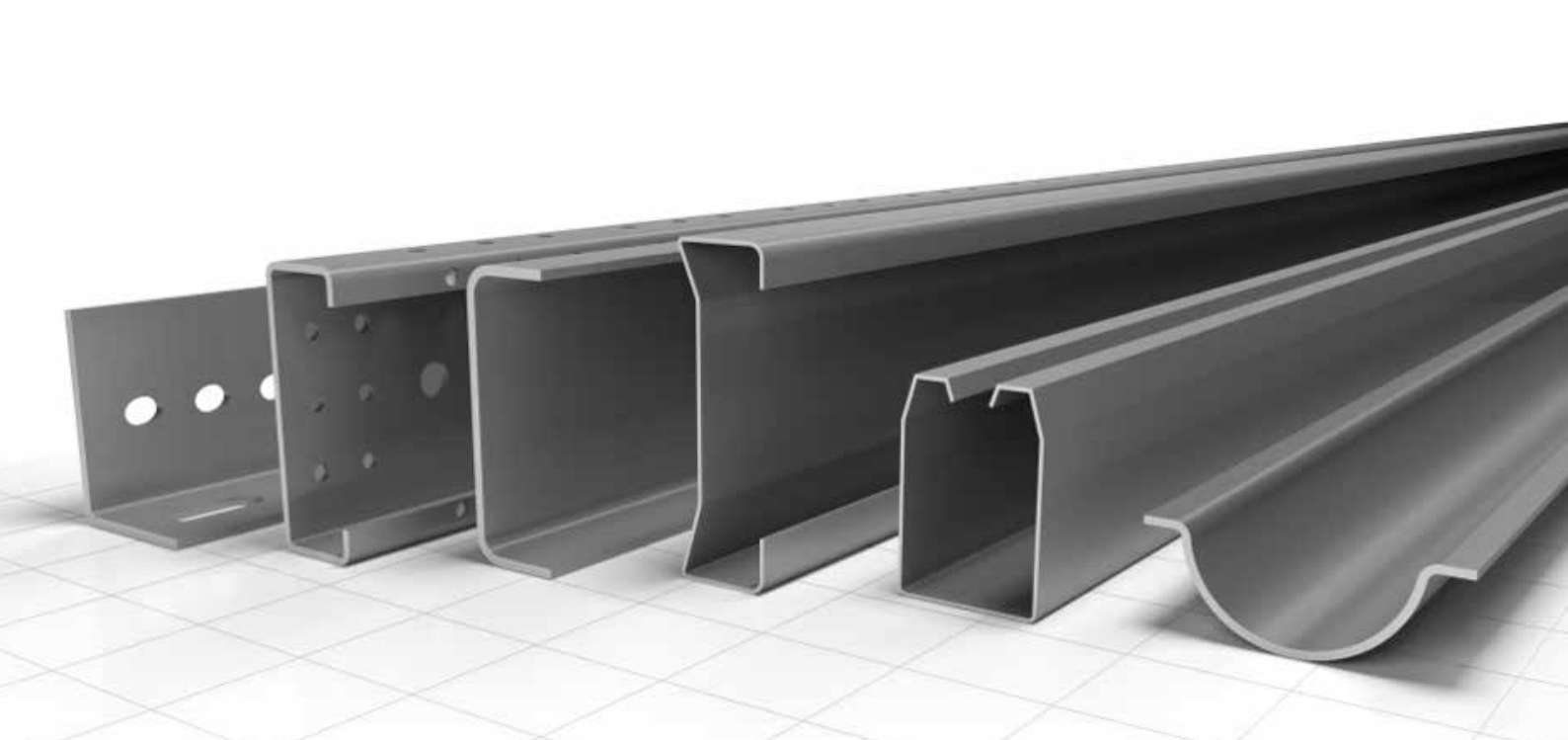
SSAB Weathering 355 section is available in various shapes and thicknesses.

Steel grade	Band width (mm)	Wall thickness (mm)	Delivery length (m)
SSAB Weathering 355	27–820	2.0–12	0.5–21

The datasheets of the steel grades are presented on ssab.com

Contact information

www.ssab.com/contact



The English version of this document shall prevail in case of discrepancy. Minor changes and updates to the document may occur, please download the latest version of this document at www.ssab.com

SSAB, Strenx, Hardox, Docol GreenCoat, Toolox, Armox, Ramor SSAB Domex, SSAB Laser, Raex, Duroxite are trademarks owned by the SSAB group of companies.

SSAB