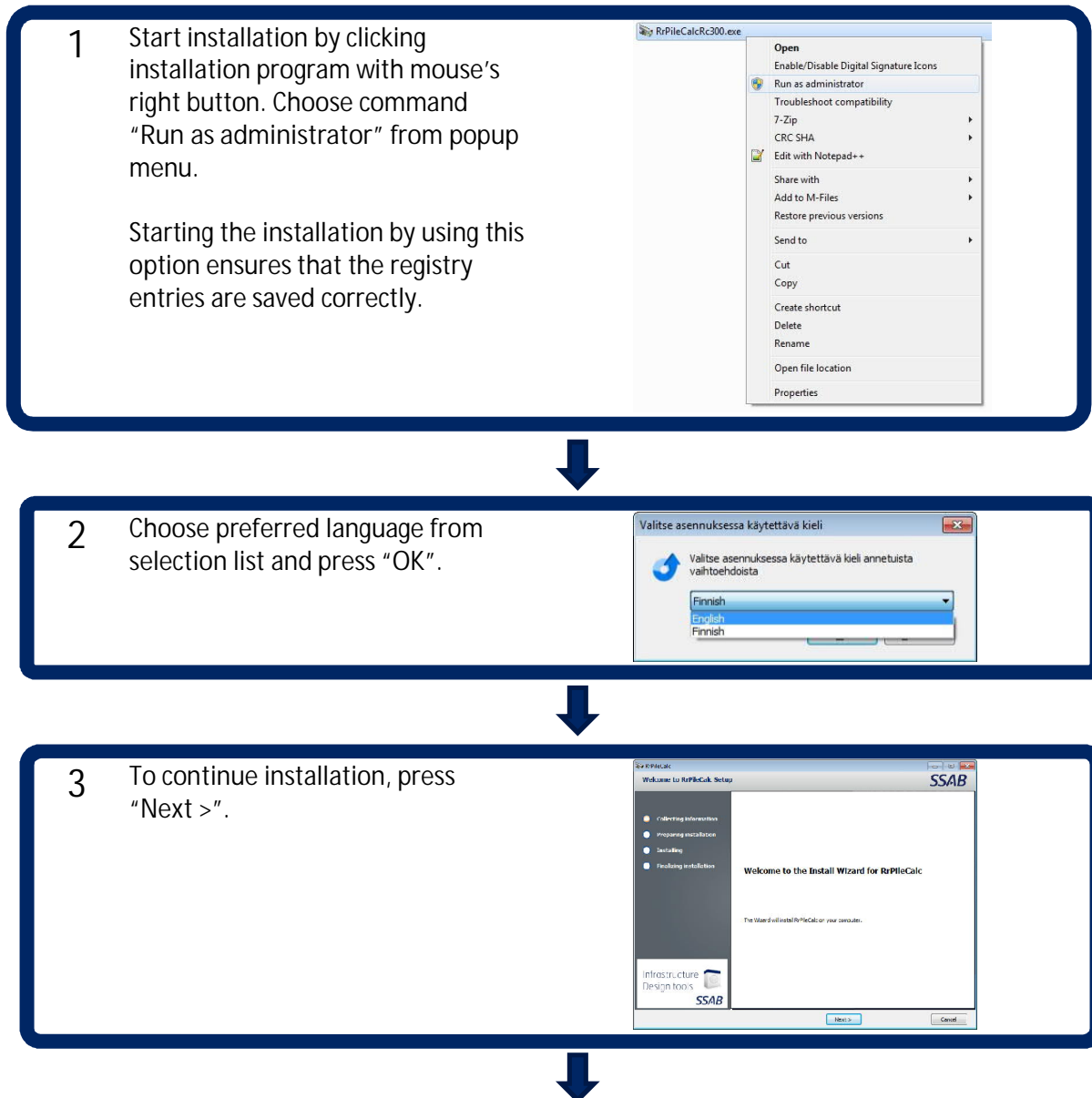


Installation instructions for RRPileCalc and PileWallCalc programs

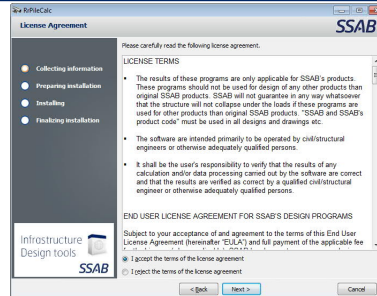
Note!

Installation of the programs requires Administrative rights to the computer. After installation is done, the registration of the programs can be done with normal User rights.

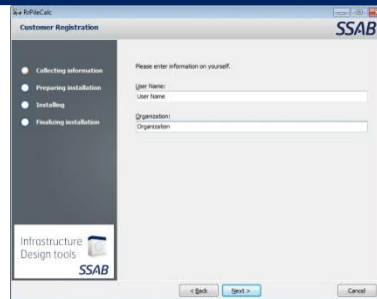
Installation of both programs is done similar way. The steps of installation are shown below.



- 4 The terms of the License agreement need to be accepted to continue the installation.



- 5 Give user information.
This information will be shown at the bottom of the program window.



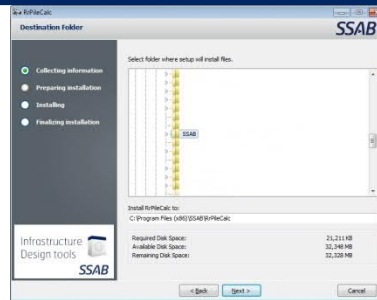
- 6 Choose location where programs will be installed.

It's recommended to install the programs to following folders:

RRPileCalc: "C:\Program Files (x86)\SSAB\RRPileCalc"

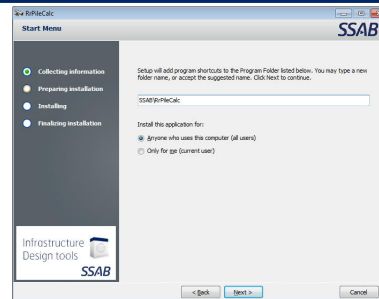
PileWallCalc: "C:\Program Files (x86)\SSAB\PileWallCalc".

Programs can also be installed in other location by choosing wanted location from folder list.

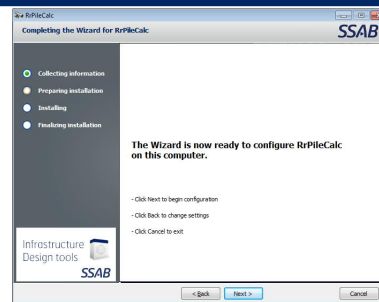


- 7 Define the location of program icon at the start menu and define users of the program.

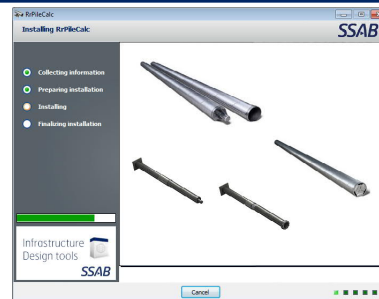
It's recommended to keep this as default.



- 8 To begin actual installation, press "Next >".

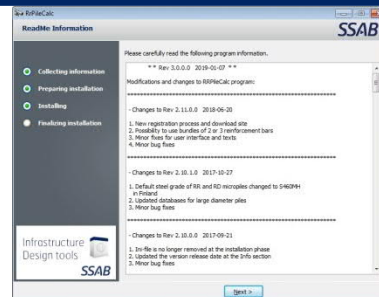


- 9 Installation begins and program files are copied.



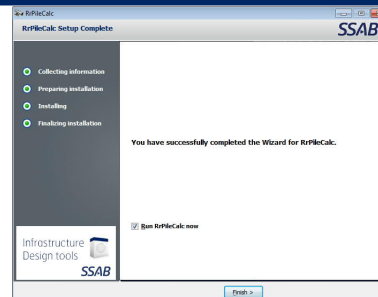
- 10 When installation is ready, a list of updates is shown.

List shows the whole update history of the program.



- 11 Installation is finished by pressing "Finish >" button.

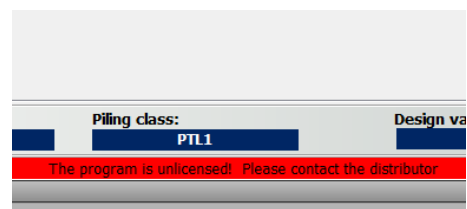
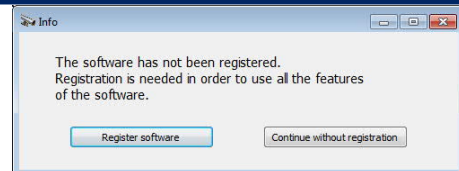
You can also Run the program immediately after installation.



- 12 When program is started for the first time, it's unregistered and a dialogue is shown.

"Register software" button takes directly to registration dialogue. Registration is required to enable full functionality of the programs.

If "Continue without registration" is chosen there will be a red bar at the bottom of the window and text "The program is unlicensed! Please contact the distributor".



- 13 Required information for registration are shown with yellow color.

To register the program you also need to approve the Privacy statement of SSAB.

By pressing "Acquire license code" button the program will contact license server and acquire the code.

Registration is finalized by pressing "OK" button.

The installation is done!



- 14 To ease the start of using RRPileCalc and PileWallCalc, there have been webinars on the use of the programs. The webinars are available also as on-demand from SSAB's web pages.

Webinars in English can be found from:
<https://www.ssab.com/support/webinar-center>

Webinars in Finnish can be found from:
<https://www.ssab.fi/support/webinar-center>

